



## **COMPANY PROFILE**

# ABOUT US

Innogreen Engineering Co., Ltd (ING), was established in 2011 as an independent local consultancy firm aiming to provide quality consultancy services particularly in Environmental and Social Impact Assessment, Environmental Monitoring for both local and international clients working in Lao PDR.

Since its establishment, the company has been providing services in environmental assessment for various types of projects, ranging from industrial tree plantations, infrastructure, mining, industrial processing plant and hydro-power energy project in many parts of Lao PDR. The company has access to experienced human resources and up-to-date advanced tools in order to provide national and international standards of practice and services.



## Our Vision

To be one of a leading firms in Laos that provide the best quality of services to our clients and maintaining high level of professional principles with excellent core values particularly in environment sustainability consulting in Laos.

## Our Services

ING offers a wide range of consultancy services through our experts who have extensive experience in their respective fields to provide the highest quality of service.

## Scope of Service:

- Building, Road & Bridge Design, Construction Management
- Environmental & Social Impact Assessment
- Environmental Quality Assessment
- Environmental Quality Monitoring
- Waste Water Treatment Plant Design
- Energy Consultancy Services

## Our Experiences

Since establishment in 2011, ING has been providing services in various types of environmental impact assessment, ranging from Agriculture, Infrastructure, Mining, Hydropower Energy, Industrial Plant, Survey and Mapping, Water Quality Monitoring, Noise and Air Measurement and Tourism project in many parts of Lao PDR. ING has access to experienced human resources and up-to date advanced tools in order to provide services that meet both national and international standards of practice and services.

# Agricultural sector

ESIA- 1,313ha Fruits Plantation Project  
Date: from November 2019 to August 2020  
Customer: Hoang Anh Attapeu Agriculture Company.  
Location: Sekong Province

ESIA- 850ha Fruits Plantation Project  
Date: from May 2019 to March 2020  
Customer: Hoang Anh Quang Minh Company.  
Location: Sekong Province

ESIA- 1,700ha Fruits Plantation Project  
Date: from May 2019 to March 2020  
Customer: Hoang Anh Attapeu Agriculture Company.  
Location: Attapeu Province

ESIA- 3,127ha Sugar Cane Plantation Project  
Date: from December 2018 to November 2019  
Customer: TCC Attapeu Sole Company Limited.  
Location: Attapeu Province

Environmental Management Plan for Rubber Plantation Project  
Date: from October 2018 to April 2019  
Customer: LVF Company.  
Location: Sekong Province

IEE- Nam Houm-Nam Xuang Irrigation Improvement Project  
Date: from April 2018 to January 2019  
Customer: Agricultural Service State Enterprise.  
Location: Vientiane Capital and Vientiane Province

IEE- Integrated Irrigated Agriculture and Rural Development Project  
Date: from June 2017 to October 2017  
Customer: Lao Consulting Group.  
Location: Savannakhet Province

ESIA- 4,900 ha Rubber Plantation Project  
Date: from July 2011 to May 2012  
Customer: Hoang Anh Quang Minh Rubber Industrial and Agricultural Co., Ltd.  
Location: Sekong and Attapeu Province



ESIA- 7,950 ha Rubber Plantation Project  
Date: from January 2012 to December 2012  
Customer: Hoang Anh Attapeu Agriculture Development Co., Ltd.  
Location: Attapeu Province

ESIA- 6,000 ha Sugar Cane Plantation in Attapeu Province  
Date: from January 2012 to December 2012  
Customer: Hoang Anh Attapeu Sugar Cane Co., Ltd.  
Location: Attapeu Province

ESIA- 2,000 ha Oil Palm Plantation Project in Attapeu Province  
Date: from January 2012 to November 2012  
Customer: Hoang Anh Attapeu Agriculture Development Co., Ltd.  
Location: Attapeu Province

ESIA- 6,000 ha Sugar Cane Plantation and Thermal Power Project, Attapeu Province  
Date: from July 2012 to January 2013  
Customer: Siphandone Bolavaen Development Co., Ltd.  
Location: Champasack Province

ESIA- 3,000 Rubber Plantation Project, Sekong Province  
Date: from May 2012 to February 2013  
Customer: LVF Rubber Co., Ltd.  
Location: Sekong Province

ESIA- 1,360 ha Corn Plantation Project, Attapeu Province  
Date: from April 2014 to August 2014  
Customer: Hoang Anh Attapeu Agriculture Development Co., Ltd.  
Location: Attapeu Province



# Livestock sector



ESIA- 10,000 Cattles Farm Project, Attapeu Province  
Date: from October 2014 to June 2015  
Customer: Hoang Anh Attapeu Sugar Cane Co., Ltd.  
Location: Attapeu Province

ESIA- 30,000 Cattles Farm Project, Sekong and Attapeu Province  
Date: from July 2014 to February 2015  
Customer: Hoang Anh Quang Minh Rubber Industrial and Agricultural Co.,  
Location: Sekong and Attapeu Province

ESIA- 70,000 Cattles Farm Project, Attapeu Province  
Date: from October 2014 to June 2015  
Customer: Hoang Anh Attapeu Agriculture Development Co., Ltd.  
Location: Attapeu Province

IEE- Crocodile Farm Project, Attapeu Province  
Date: from March 2014 to July 2015  
Customer: Hoang Anh Attapeu Agriculture Development Co., Ltd.  
Location: Attapeu Province



# Infrastructure

Improvement of Sikeut – Sikhai Section (KM6 to KM12) of NR-13N.

Date: from September 2021 to May 2022

Customer: WB, AIIB, NDF

Location: Vientiane Capital

Vientiane Dry Port Labour Audit and ESDD Site Visit.

Date: from October 2021 to November 2021

Customer: ERM, Thailand

Location: Vientiane Capital

Supplementary of ESIA- Vientiane Dry Port and Logistic Project.

Date: from October 2021 to December 2021

Customer: RINA, Italy

Location: Vientiane Capital

ESIA- Vientiane Dry Port and Logistic Project.

Date: from June 2019 to February 2020

Customer: Sitthi Logistic Co. Ltd.,

Location: Vientiane Capital



IEE- New port on Mekong River Bank for Transportation of Flyash from Hongsa power Plant through Mekong River to Vientiane Capital, Lao PDR.

Date: from July 2019 to March 2020

Customer: M Fly Ash Lao Co. Ltd.,

Location: Vientiane Capital

IEE- Green Infrastructure Project

Date: from April 2019 to February 2020

Customer: PISECCON (LAO) SOLE CO. LTD.,

Location: Savannakhet, Saravan, Sekong and Champasack Province

Feasibility Study and IEE of Bonded Warehouse Project

Date: from July 2019 to August 2020

Customer: Sokxay Group.

Location: Vientiane Capital



ESIA- Kasemrad Hospital Project  
Date: from November 2018 to July 2019  
Customer: Bangkok Chain International,  
Thailand.  
Location: Vientiane Capital

Feasibility Study and IEE for Thakhek Dryport  
Project  
Date: from December 2018 to July 2019  
Customer: Thavisack Trading Import-Export  
Co., Ltd.  
Location: Khammuane Province

ESIA- 13NR Rehabilitation Project (from Sikert  
Junction to Phonhong Junction)  
Date: from June 2017 to March 2018  
Customer: World Bank.  
Location: Vientiane Capital

Environmental monitoring for Wattay  
International Airport Extension Project  
Date: from January 2016 to May 2018  
Customer: Hazama Ando Corporation.  
Location: Vientiane Capital

IEE- The Old Pipelines Replacement and new  
Pipelines Expansion Project in the Internal of 4  
Districts in Vientiane Capital  
Date: from May 2017 to August 2017  
Customer: Guangdong No. 3 Water  
Conservancy and Hydroelectric Engineering  
Board Co., Ltd.  
Location: Vientiane Capital

IEE and Feasibility study for 3 Roads  
Construction Project, Houaphan Province  
Date: from January 2017 to May 2017  
Customer: Chitchalern Construction Company.  
Location: Houaphan Province

IEE –Construction of Xekhoumklam and  
Xethamouk Bridge on NR9 Project  
Date: from 2016 to 2016  
Customer: Department of Roads (DOR/MPWT)  
Location: Savannakhet Province



Follow up on construction and decoration of  
service units BCEL 01&02 project  
Date: from 2015 to June 2017  
Customer: BCEL, Laos.  
Location: Vientiane and Salavan Province

IEE and Feasibility study for 17A-17B Roads  
Improvement Project, Luang Namtha Province  
Date: from December 2015 to June 2016

Customer: Chitchalern Construction Company.  
Location: Luang Namtha Province  
IEE and Feasibility study for Muang Xon  
Infrastructure Construction Project, Houaphan  
Province  
Date: from May 2015 to August 2015  
Customer: Chitchalern Construction Company.  
Location: Houaphan Province

ESIA- Nongkhang Airport Construction Project,  
Houaphan Province  
Date: from May 2013 to February 2014  
Customer: Hoang Anh Attapeu Agriculture  
Development Co., Ltd.  
Location: Houaphan Province





IEE - 13S Highway (Joudsong-Nabouap)  
Upgrading Project, Khammuane Province  
Date: from February 2014 to July 2014  
Customer: China Road and Bridge Corporation  
Co., Ltd.  
Location: Khammuane Province



ESIA - 5 Star-Hotel Complex Construction  
Project, Vientiane Capital  
Date: from January 2014 to July 2014  
Customer: BIMGroup  
Location: Vientiane Capital

Environmental monitoring for Vientiane  
Sustainable Urban Transport Project  
Date: from 2014 to 2014  
Customer: Asian Development Bank.  
Location: Vientiane Capital

ESIA - Attapeu International Airport  
Construction Project  
Date: from June 2012 to March 2013  
Customer: Hoang Anh Attapeu Agriculture  
Development Co., Ltd.  
Location: Attapeu Province



IEE - Development, allocation, management  
and rehabilitation project of Pakse city and  
Phonethong district.  
Date: from 2020 to 2020  
Customer: Champakham Group  
Location: Champasack Province





# Mining

ESIA - Ore Processing Plant Project, Khammuane Province

Date: from November 2018 to 2019

Customer: Lao Yin Hai Mining Co., Ltd.

Location: Khammuane Province

ESIA - 92.24 Km<sup>2</sup> Potash Mine Project, Khammuane Province

Date: from December 2015 to June 2016

Customer: Lao Kaiyuan Mining Co., Ltd.

Location: Khammuane Province

ESIA- Iron Ore Mining and Iron Ore Processing Plant Project, Champasack Province

Date: from February 2013 to October 2013

Customer: Hui Yaun Mining Co., Ltd.

Location: Champasack Province

ESIA - Sakai Glod Mining Project, sangthong District

Date: from 2015 to 2015

Customer: Sakai mining co.,ltd

Location: Vientiane capital

ESIA - 2.5 million ton/annual- Potash Processing Plant Project, Khammuane Province

Date: from March 2013 to October 2013

Customer: Lao Kaiyuan Mining Co., Ltd.

Location: Khammuane Province



# Energy

**Ban Hat - Ban Na Attapeu 500kV Power Transmission and Substation Project**  
Date: from October 2020 to June 2022  
Customer: YEIG International Engineering Co., Ltd  
Location: Attapeu and Champasack Province

**ESIA - 500KV Transmission Line Project, Sekong Province**  
Date: from April 2020 to February 2021  
Customer: Impact Energy Asia Co., Ltd.  
Location: Sekong Province

**Preparation of Subplans and revision of ESIA for Nam Phoun Hydropower Project**  
Date: from March 2020 to December 2020  
Customer: Nam Phoun Hydropower Co. Ltd.,  
Location: Attapeu Province

**SESO for Sekong B Downstream Hydropower Project**  
Date: from November 2019 to Present  
Customer: V&H Corporation (Lao) Limited.  
Location: Attapeu Province

**Environmental Flow and Biodiversity Offset Plan for Tadsakhoi Hydropower Project**  
Date: from October 2019 to July 2020  
Customer: B.Crimm Power (Lao) Co. Ltd.,  
Location: Savannakhet Province

**IEE - Transmission Line from Nhot Ou-Boun Neua Project**  
Date: from April 2019 to December 2019  
Customer: EDL Lao.  
Location: Phongsaly Province

**SESO for Sekong A Downstream Hydropower Project**  
Date: from March 2019 to Present  
Customer: Sekong A Downstream Hydropower Company Limited.  
Location: Attapeu Province

**IEE - 115kV Sekong A Downstream Hydropower Project**  
Date: from December 2018 to May 2019  
Customer: Sekong A Downstream Hydropower Company Limited.  
Location: Attapeu Province

**ESIA- Sekong B Project**  
Date: from March 2018 to May 2019  
Customer: V&H Corporation (Lao) Limited.  
Location: Attapeu Province

**Environmental monitoring for Nam Ngum 1 HPP Expansion Project**  
Date: from August 2017 to February 2022  
Customer: Hazama Ando Corporation.  
Location: Vientiane Province

**IEE - 115kV TL and EIA Renewal Sekong B Hydro Power Project, Attapeu Province**  
Date: from March 2018 to June 2018  
Customer: V & H Corporation (Lao) Ltd.  
Location: Attapeu Province





**ESIA - 65 MW Nam Et 2 Hydro Power Construction Project, Houaphan Province**  
Date: from March 2014 to March 2015  
Customer: Nam Kong 3 Electric Co., Ltd.  
Location: Houaphan Province

**ESIA - 50 MW Nam Et 3 Hydro Power Construction Project, Houaphan Province**  
Date: from March 2014 to March 2015  
Customer: Nam Kong 3 Electric Co., Ltd.  
Location: Houaphan Province

**ESIA - 30 MW XeSou Hydro Power Construction Project, Houaphan Province**  
Date: from November 2013 to October 2014  
Customer: Nam Kong 3 Electric Co., Ltd.  
Location: Attapeu Province

**ESIA - 600MW Wind Farm Project, Sekong and Attapeu Province**  
Date: from September 2014 to July 2015  
Customer: Impact Energy Asia Co., Ltd.  
Location: Sekong and Attapeu Province

**Transmission Line from Nam Kong 2&3 and Integrated Sugar Industrial Zone to Saphaothong Sub-station Project, Attapeu Province**  
Date: from June 2012 to January 2013  
Customer: Houang Anh Attapeu Electric Co., Ltd.  
Location: Attapeu Province



**SESO - Annex C for Huay la ngae Hydropower Project**  
Date: from 2018 to 2021  
Customer: Jiantou International Investment Limited  
Location: Sekong Province

**IEE - 230KV Transmission Line Nam Hong Hydro Power Project, Borikhamxay Province**  
Date: from March 2018 to June 2018  
Customer: Guangdong No. 3 Water Conservancy and Hydroelectric Engineering Co., Ltd.  
Location: Borikhamxay Province

**ESIA - Nam Lan 1+2 Hydropower Project**  
Date: from 2017 to July 2017  
Customer: SN Energy Limited  
Location: Xiengkhuang Province

**ESIA - 50MW Wind Power Project, Champasack Province**  
Date: from December 2016 to August 2017  
Customer: Pinggao Group Co., Ltd.  
Location: Champasack Province

**ESIA - 93 MW Nam Et 1 Hydro Power Construction Project, Houaphan Province**  
Date: from August 2013 to July 2014  
Customer: Nam Kong 3 Electric Co., Ltd.  
Location: Houaphan Province



# Industry

ESIA - Integrated Sugar Industrial Zone, Attapeu Province

Date: from January 2012 to October 2012

Customer: Hoang Anh Attapeu Sugar Cane Co., Ltd.

Location: Attapeu Province

ESIA - 30,000 t\yr Rubber Processing Plant Project, Attapeu Province

Date: from October 2012 to May 2013

Customer: Hoang Anh Attapeu Agriculture Development Co., Ltd.

Location: Attapeu Province

ESIA - 3,000 t\yr Rubber Processing Plant Project, Sekong Province

Date: from May 2012 to February 2013

Customer: LVF Rubber Co., Ltd.

Location: Sekong Province

IEE - Meuang Feung Cement Plant Project, Vientiane Province

Date: from March 2012 to October 2012

Customer: Phetthongkham Mining Co., Ltd.

Location: Vientiane Province

Wastewater Treatment Plant Design and Construction Supervision Project

Date: from 2015 to 2017

Customer: Savan TVS Consultant Co., Ltd.

Location: Special Economic Zone, Savannakhet Province



# Surveying and Mapping

**Sustainable Design of Urban Mobility in Medium-Sized Metropolitan Regions (SMMR) Project**

Date: from February 2020 to April 2020  
Customer: GFA Consulting Group.  
Location: Vientiane Capital

**Topographical Mapping of Inner Zone in Vientiane Capital Project**

Date: from January 2014 to March 2014  
Customer: JICA.  
Location: Vientiane Capital

**GHG-Clean Development Mechanism Project**

Date: from November 2011 to February 2012  
Customer: NIPON KOEI Co., Ltd.  
Location: Vientiane Capital

# Environmental Monitoring

**Noise Monitoring of Bus Depot in Lak 18 on 135 Road Project**

Date: from June 2014 to June 2014  
Customer: Asian Development Bank.  
Location: Vientiane Capital

**Nam Ngum1 Expansion Project, EDL**

Date: from 2015 to 2020  
Customer: Electric Due Lao.  
Location: Vientiane Province

**Air Quality Monitoring for Bauxite Processing Plant Project, Paksong District**

Date: from 2015 to 2015.  
Customer: ESL Sole Co., Ltd.  
Location: Champasack Province



# Tourism

Phatad Ke Botanical Garden Project  
Date: from 2014 to 2014  
Customer: Lao Consulting Group.  
Location: Luang Prabang Province

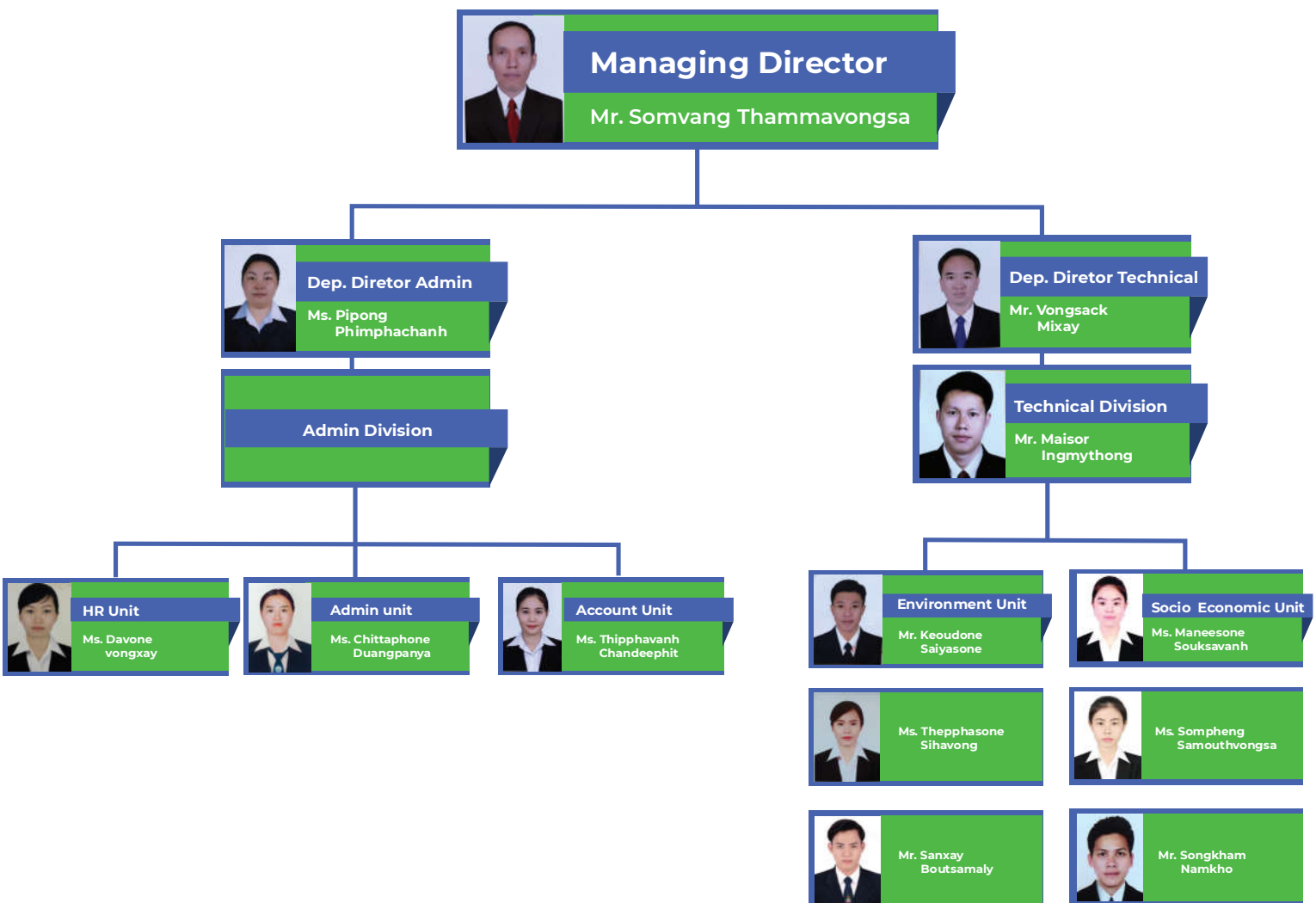
Project for Urban Development Management in  
Lao PDR  
Date: from October 2014 to March 2015  
Customer: JICA  
Location: Vientiane Capital



# Tools



## ORGANIZATION:





## Contact:

Phonsinouan Road, Dongpalane Thong Village,  
Sisattanak District, Vientiane Capital, Lao PDR

**Tel: 030 7770669, 021 225444**

Email: [info@innogreenlao.com](mailto:info@innogreenlao.com)  
<http://www.innogreenlao.com>